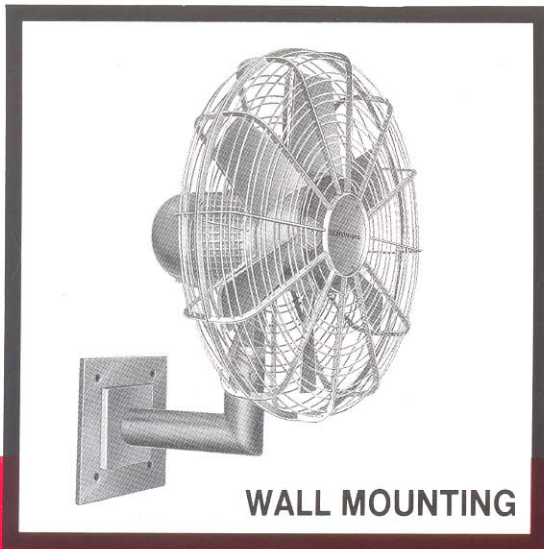


ALMONARD

INDUSTRIAL MANCOOLER



PEDESTAL



WALL MOUNTING



REGD. TRADE MARK



TUBULAR

Proven Performance
QUALITY • DEPENDABILITY • RELIABILITY

'ALMONARD' has included Mancooler in its product range to facilitate the shop floor in the industries to provide a better environment for their employees which in turn results by the increase in production.

'ALMONARD' Mancoolers are designed for large Air Volume discharge with high velocity and for long distance sweep.

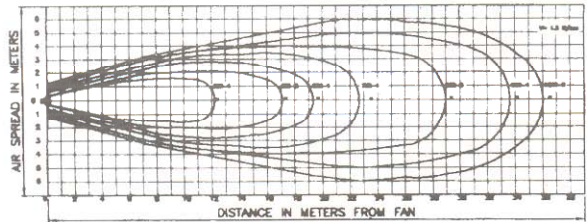
'ALMONARD' Mancoolers can be used in various applications such as Arc furnaces, Drier Annealing furnaces, cooling the electrical equipments, for general comfort and proper ventilation in the shop floors.

'ALMONARD' Mancoolers are available in three types: Wallmounting or Bracket, Pedestal and Tubular type.

WALLMOUNTING OR BRACKET TYPE

The Wallmounting Mancoolers are suitable for mounting at higher elevation in the wall or stanction to avoid the occupation of floor

AIR VELOCITY AND TRAVEL DIAGRAM (FOR MANCOOLERS)



TECHNICAL SPECIFICATION FOR INDUSTRIAL HEAVY DUTY TYPE MAN COOLER

Sweep mm/Inches	H.P.	RPM	Total air delivery 10 times blade sweep (M ³ /Hr.)	MINIMUM PEAK AIR VELOCITY AT A DISTANCE OF	
				10 times blade sweep (M.min.)	15 times blade sweep (M/min.)
450 (18")	0.5	1370	12000	200	150
450 (18")	2.0	2810	24000	250	200
600 (24")	0.75	1400	28000	250	150
750 (30")	2.0	1400	37500	250	150
900 (36")	2.0	920	56000	250	150
900 (36")	3.0	1400	65000	275	175
1200 (48")	7.5	950	74500	250	150

1. Motors are generally available for 415V, 3 Phase, 50Hz, AC supply.
2. Performance figures conform to IS 6272 with tolerances mentioned therein.
3. Specifications are subject to change without notice due to continuous development and innovation.

space. These fans are mounted on steel pipe with suitable holes in the base plates for heavy duty Motors.

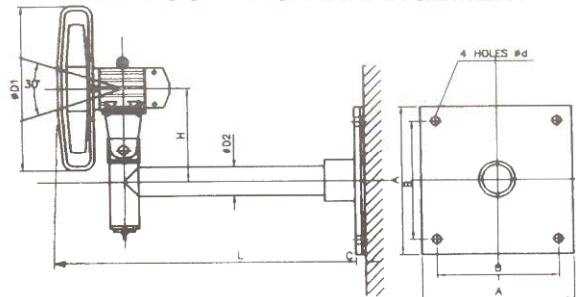
PEDESTAL TYPE

These type Mancoolers are designed to stand on the shop floors. The cast aluminium alloy, statically and dynamically balanced impeller of high efficiency Aerofoil Section blade is mounted directly on the motor shaft with suitable, sturdy protection guards and mounted on the steel pipe with motor base plate. The cast iron solid base holds the assembly on the floor free from Vibration. The Air throw can be adjusted vertically for various positions. Castor wheels can be provided for the special application on specific request.

TUBULAR TYPE

In this type of Mancoolers, the impeller and Motor Assembly is mounted in the circular casing with suitable stand arrangement. This can be moved from place to place easily even in rough floor areas. The Air flow can be adjusted vertically for any convenient Position. Necessary protection guards are also provided on both sides of the casing.

WALL MOUNTING ARRANGEMENT



TYPE	SIZE mm/inch	A	B	C	∅ D1	∅ D2	L	H	∅ d
WMC-45	450/18"	250	200	16	500	48	600	250	15
WMC-60	600/24"	250	200	16	650	48	600	250	15
WMC-75	750/30"	265	200	16	800	76	560	260	15
WMC-90	900/36"	265	200	16	950	76	560	272	15



REGD. TRADE MARK

ALMONARD PRIVATE LIMITED

305, Kakad Chambers, 3rd Floor, 132, Dr. Annie Besant Road, Worli, Mumbai - 400 018.

Tel.: 2492 6552, 2490 3094, 2490 3463, 2490 2269. ● Fax: 022-2490 3760. ● E-mail: almonard@bom7.vsnl.net.in

BARODA Works: 852/2 & 853/1 GIDC, Makarpura, BARODA - 390010. ● Tel.: 2642264. ● Fax: 2656330

CHENNAI Off. & Works: 439/3B, Ekambara Naicker Industrial Estate, Off Arcot Road, Alapakkam, Porur, Chennai - 600 116.

Tel.: 2476 2100, 2476 2030, 2476 1424. ● Fax: 2476 2627. ● Email: almonard@md5.vsnl.net.in

PUNE:

118/119 Indulal Comm. Complex,
Navi Peth, L.B.S. Road,
PUNE - 411 030.
Telefax: 2433 2728

NAGPUR:

Venkatesh Apartment,
193, Trimurtinagar, Square
Ring Road, NAGPUR - 440 022.
Telefax: 2236 822

AHMEDABAD:

212, 2nd Flr, Nalanda Enclave,
Opp. Hotel Chicago, Elisbridge,
AHMEDABAD - 380 006.
Telefax: 2658 4876

INDORE:

50, Vishnupuri Main
A. B. Road,
INDORE - 452 001.
Telefax: 246 4676, 244 0730

MADURAI:

No. 25, Kakkan Street,
Shenoy Nagar,
MADURAI - 625 020.
Tel.: 253 3808, Fax: 252 0303

COIMBATORE:

No. 11, Captain Palaniswamy
Layout, Thadagam Road,
COIMBATORE - 641 002.
Telefax: 245 1811

VIJAYAWADA:

9-3-13/B, Brahmin Street,
VIJAYAWADA - 520 001.
Telefax: 256 1246

BANGALORE:

230, Magadi Main Road,
BANGALORE - 560 023.
Tel.: 2338 1669.
Fax: 2330 3065

COCHIN:

43/2631, Masjid Lane,
S.R.M. Road, Ernakulam,
Cochin - 682018.
Tel.: 2400862, Telefax: 2400681

CALICUT:

23/1158 A&B Kambitta Valappu,
Cotton Mill Rd., Thiruvannur P.O.
CALICUT - 673 029.
Telefax: 2323672

SECUNDERABAD:

5 & 6 Padma Plaza,
6-2-101/6, New Boiguda,
SECUNDERABAD - 500 003.
Tel.: 2754 2788, Fax: 2754 2799

VISAKHAPATNAM

Door No. 49-52-2A, 1st Floor,
Beside BSNL Extn Office,
Sankara Matham Rd, Santipuram,
Visakhapatnam 530 016. Tel.: 0891-2765826

BHUBANESHWAR:

A/68, Sahid Nagar,
BHUBANESHWAR - 751 007.
Telefax: 2542443

KANPUR:

16/71, B Civil Line,
Near Income Tax Office
KANPUR - 208 001 (U.P.)
Telefax: 2306238

DELHI:

Plot No. 417, Functional Ind. Estate,
Patparganj Industrial Area,
DELHI - 110 092.
TeleFax: 2215 6143, 2215 6154

JAIPUR:

D-18-A-1, Meera Marg,
Bani Park,
JAIPUR - 302 016.
Tel: 0141-2200152, Telefax: 2207982

JALANDHAR

SCF 95, Urban Estate,
Phase-I,
JALANDHAR (Punjab)
Tel.: 0181-5521192